

SEVERE WEATHER BRIEFING

Expected Hazards

- Damaging Winds (70 mph?)
- Brief Heavy Rainfall
- Some Large Hail



Recorded:

7/12/2015 12:27 PM



NATIONAL WEATHER SERVICE LA CROSSE

NATIONAL OCEANIC AND ATMOSPHERIC ADMINISTRATION

Impacts

- **Widespread wind damage possible!**
- **If outdoors, know your nearest shelter location (take shelter when storms approach).**
- **A quick 1 to 2 inches of rain could lead to localized flooding, especially in urban and poor drainage areas.**

Recorded:

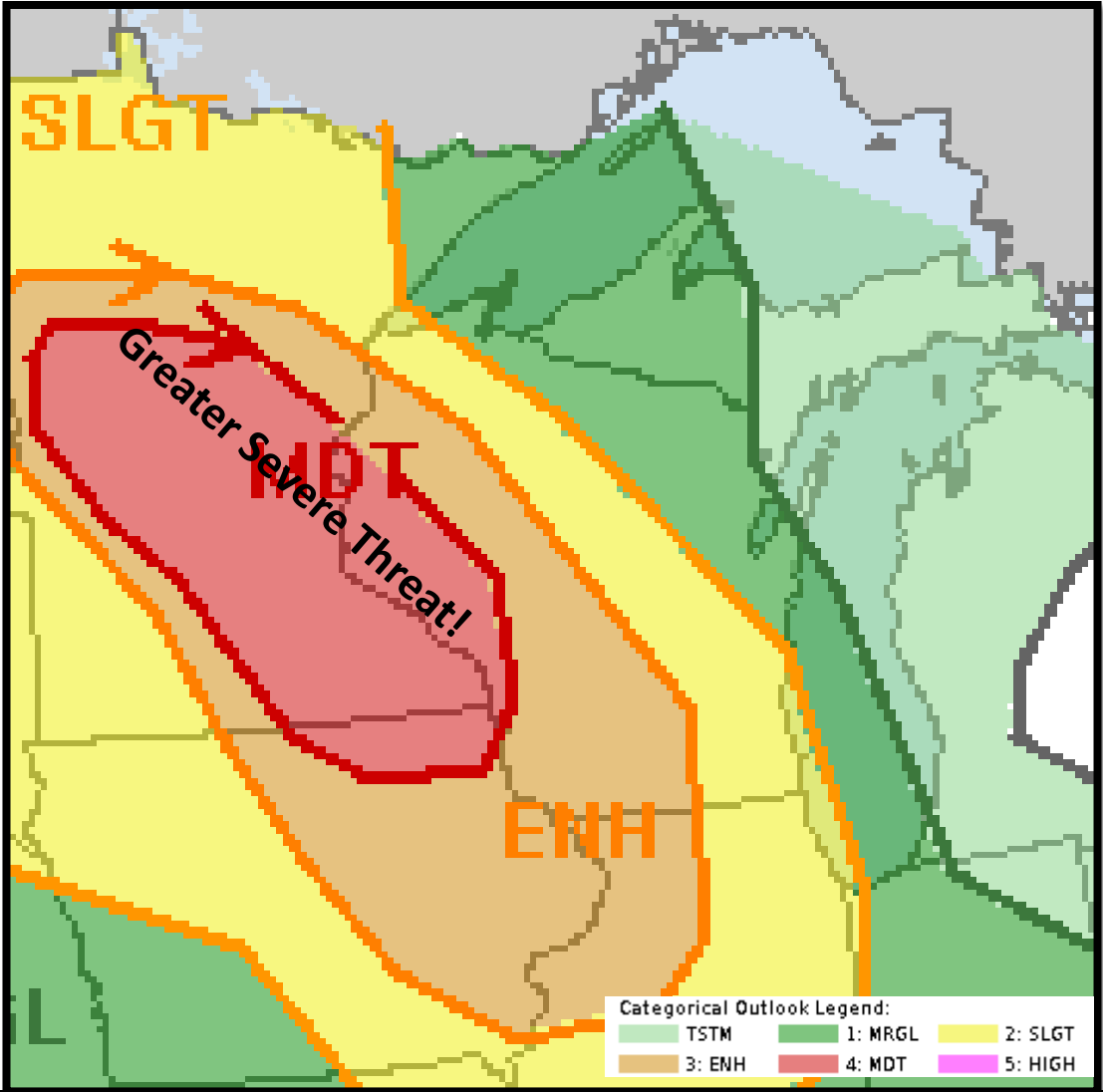
7/12/2015 12:27 PM



NATIONAL WEATHER SERVICE LA CROSSE

NATIONAL OCEANIC AND ATMOSPHERIC ADMINISTRATION

SEVERE THUNDERSTORM OUTLOOK TODAY/TONIGHT



NATIONAL WEATHER SERVICE LA CROSSE

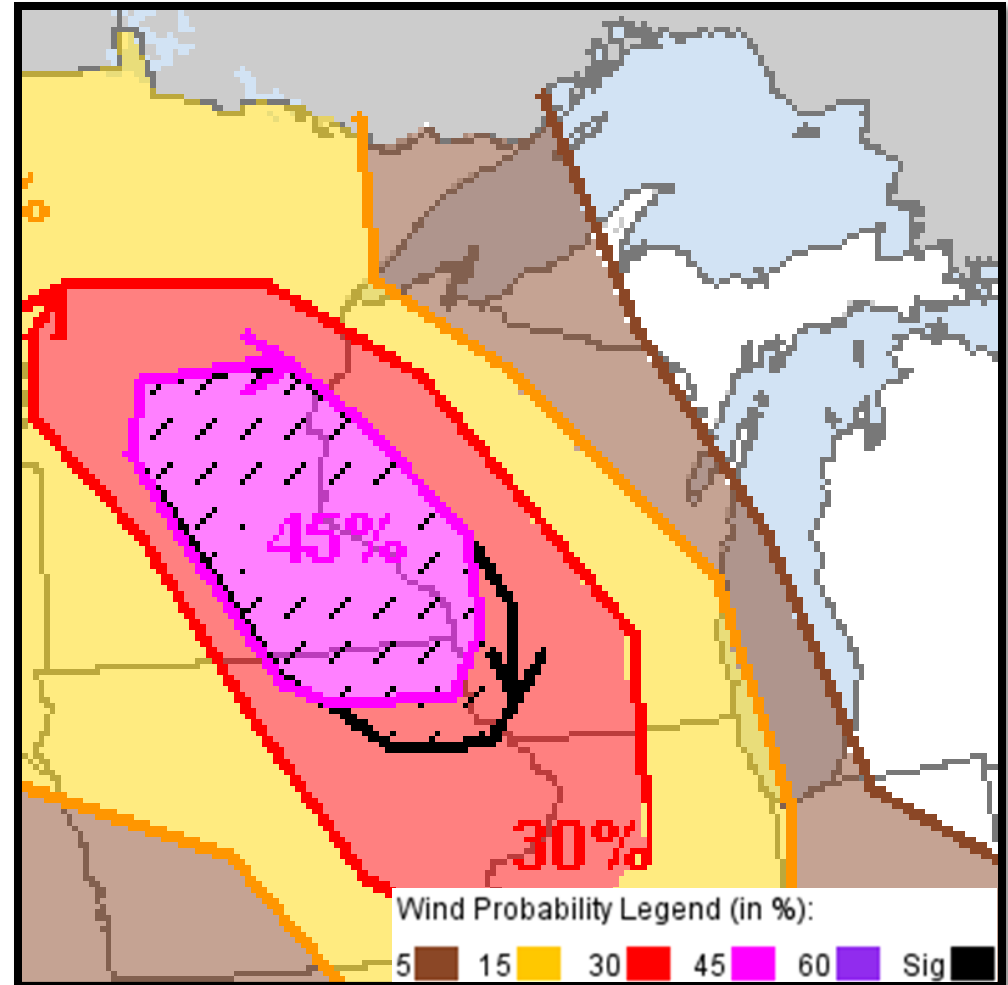
NATIONAL OCEANIC AND ATMOSPHERIC ADMINISTRATION

DAMAGING WIND PROBABILITIES TODAY/TONIGHT

Probability of damaging thunderstorm winds or wind gusts of 58 mph or higher within 25 miles of a point.

Widespread Damaging Winds Possible

- 70+ MPH Gusts



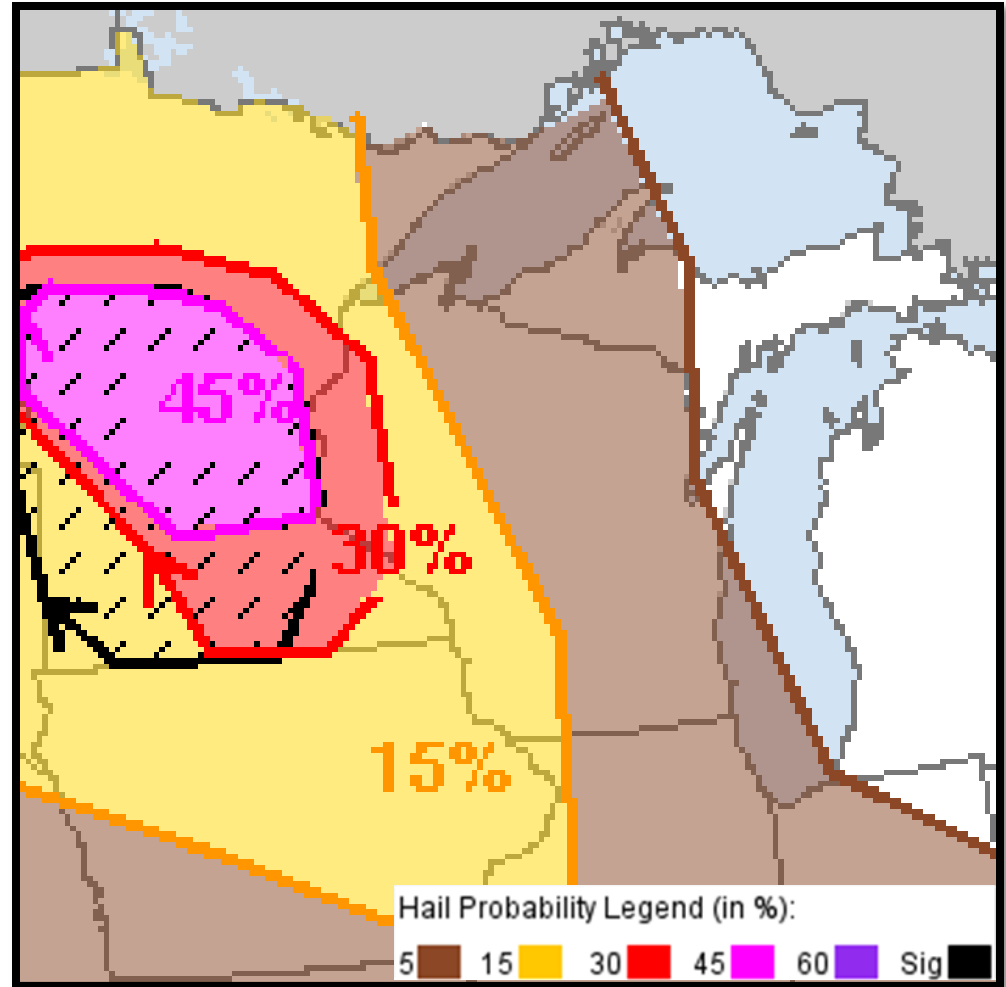
NATIONAL WEATHER SERVICE LA CROSSE

NATIONAL OCEANIC AND ATMOSPHERIC ADMINISTRATION

HAIL PROBABILITIES TODAY/TONIGHT

Probability of one inch diameter hail or larger within 25 miles of a point.

- Higher probability for very large hail over central/southern Minnesota.



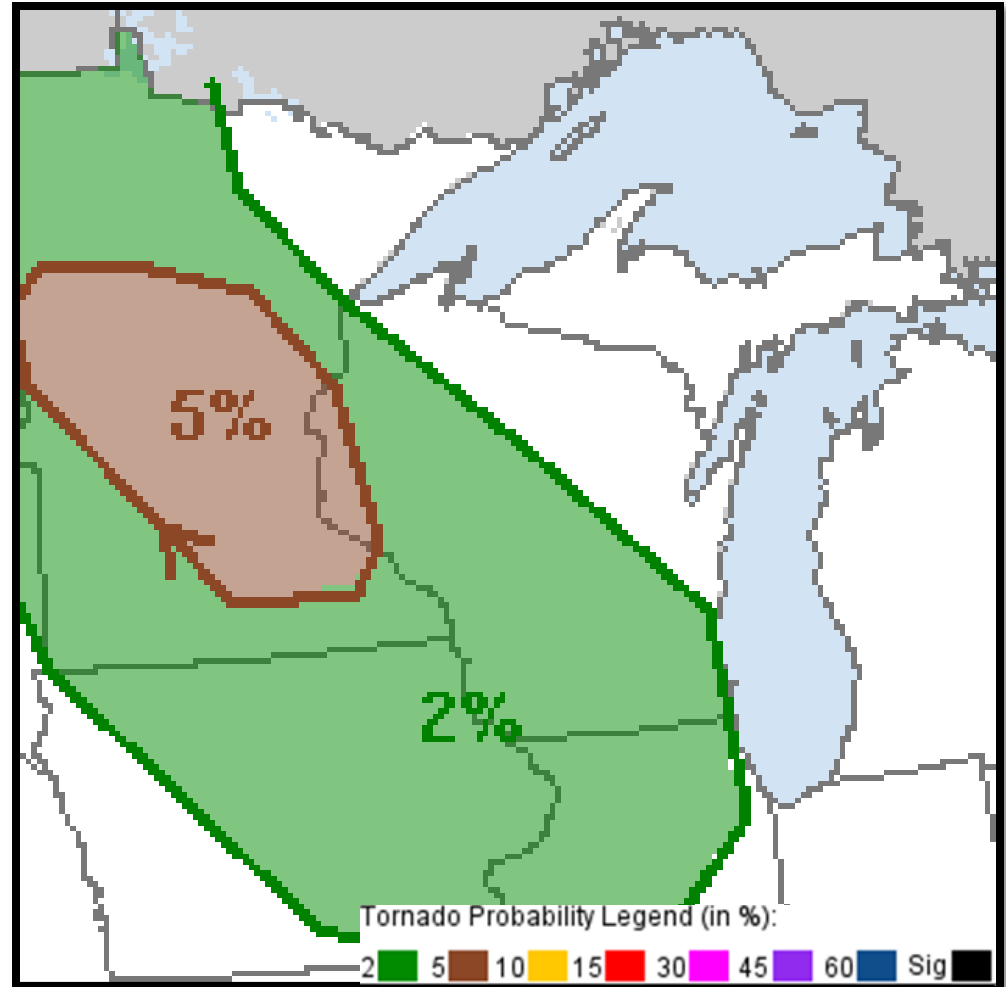
NATIONAL WEATHER SERVICE LA CROSSE

NATIONAL OCEANIC AND ATMOSPHERIC ADMINISTRATION

TORNADO PROBABILITIES TODAY/TONIGHT

Probability of a tornado within 25 miles of a point.

- Isolated tornado possible?

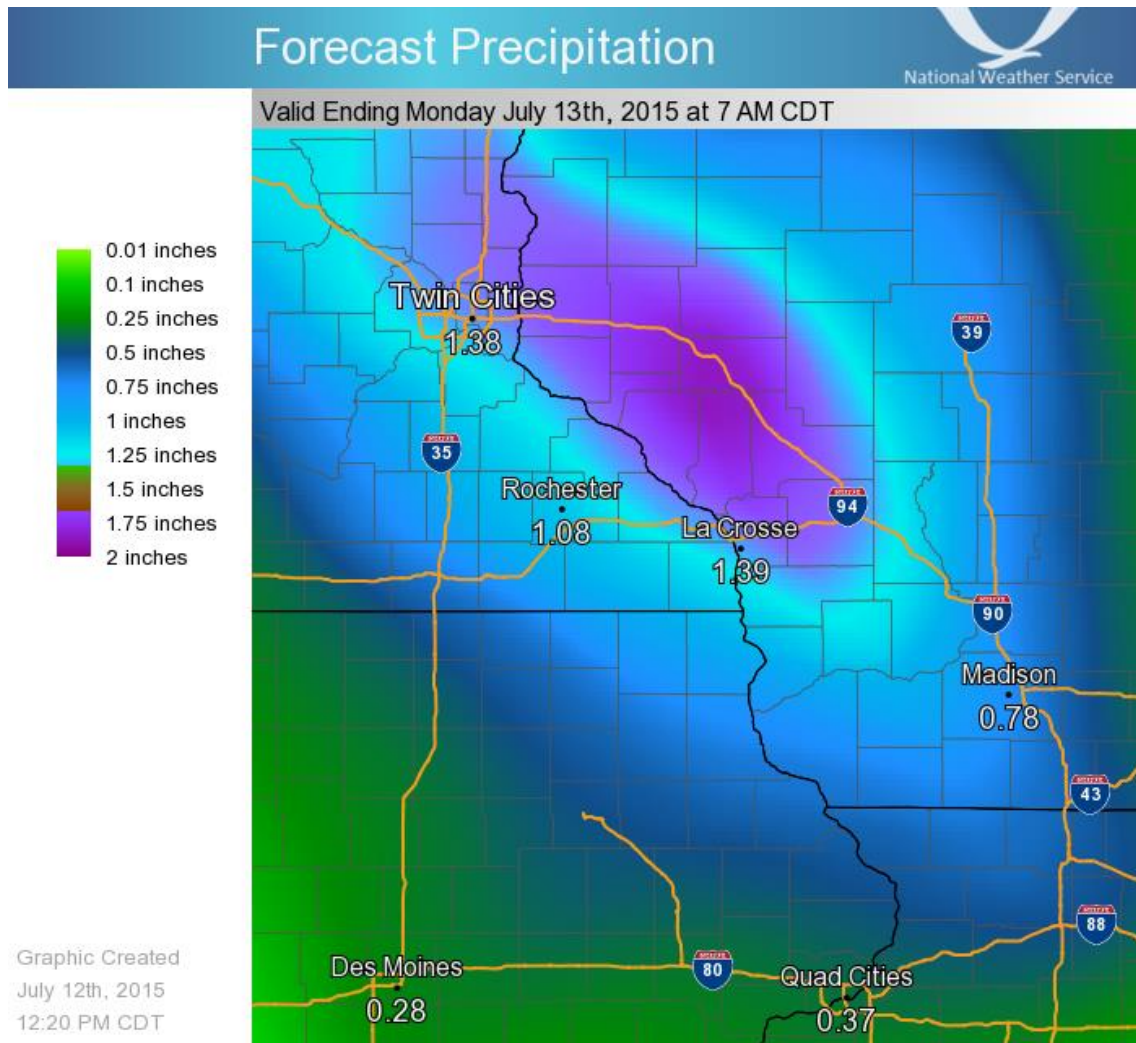


NATIONAL WEATHER SERVICE LA CROSSE

NATIONAL OCEANIC AND ATMOSPHERIC ADMINISTRATION

FORECAST RAINFALL

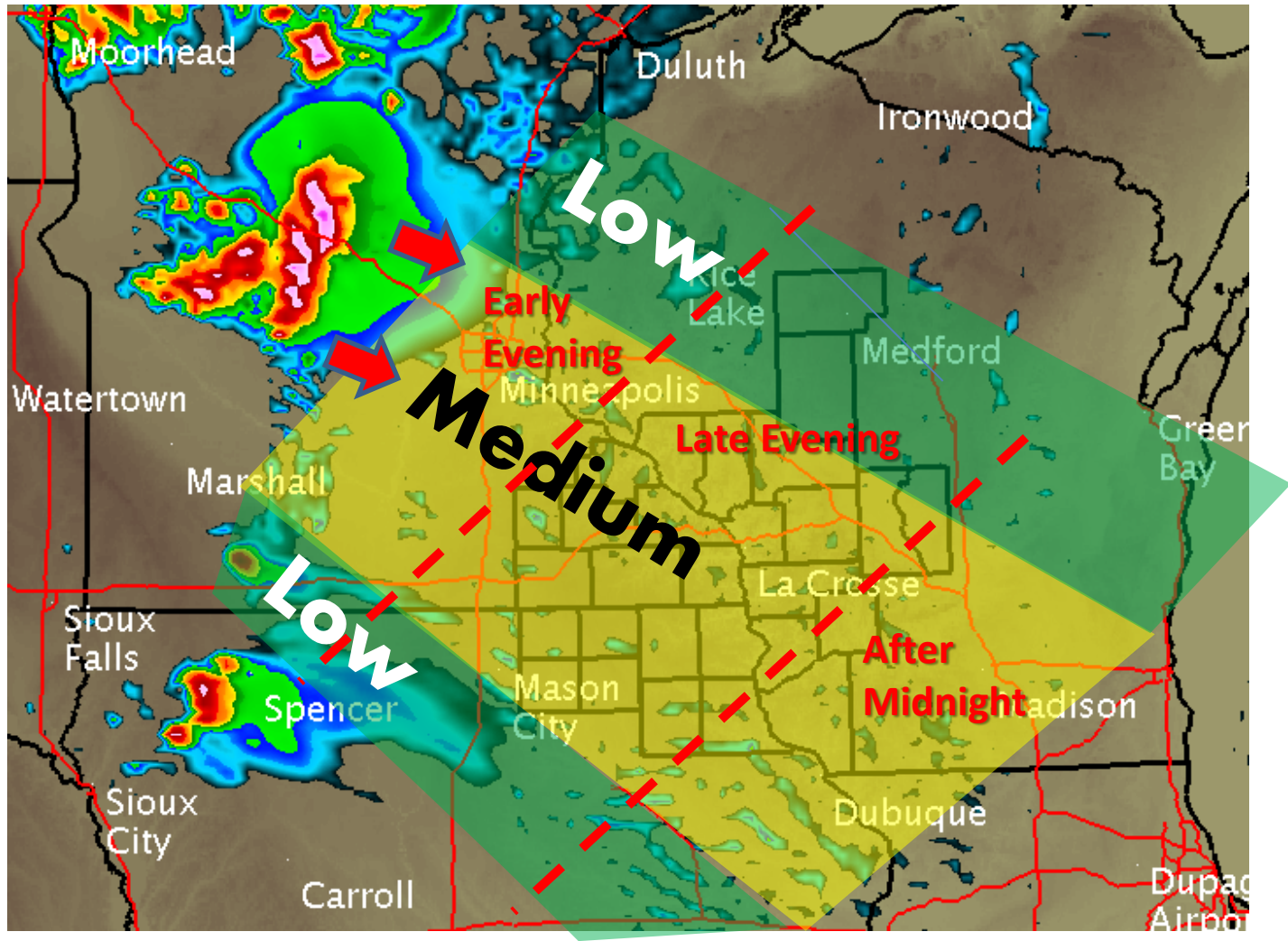
- A quick 1 to 2 inches of rainfall could lead to some flooding.



NATIONAL WEATHER SERVICE LA CROSSE

NATIONAL OCEANIC AND ATMOSPHERIC ADMINISTRATION

Storm Track Confidence (Forecast Radar Early This Evening)



NATIONAL WEATHER SERVICE LA CROSSE

NATIONAL OCEANIC AND ATMOSPHERIC ADMINISTRATION

RISK LEVEL



Risk From:

Tornadoes (Mainly Southeast Minnesota)



Damaging Winds (Most of the area, higher chances south/west of I-94)



Large Hail (Mainly during the early evening hours)



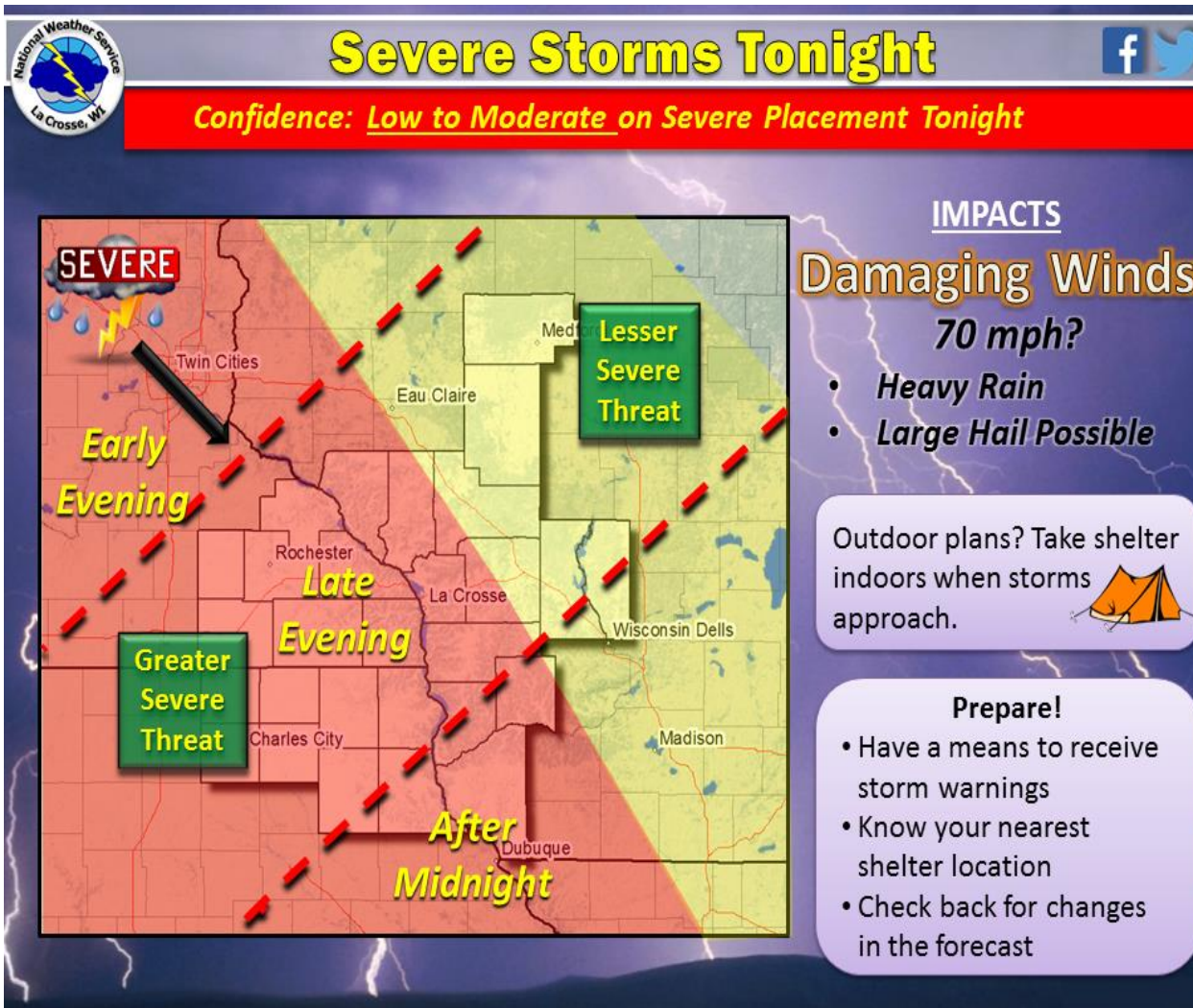
Heavy Rain (A quick 1 to 2 inches of rainfall possible)



NATIONAL WEATHER SERVICE LA CROSSE

NATIONAL OCEANIC AND ATMOSPHERIC ADMINISTRATION

NWS LA CROSSE WEATHER STORY



NATIONAL WEATHER SERVICE LA CROSSE

NATIONAL OCEANIC AND ATMOSPHERIC ADMINISTRATION

SUMMARY POINTS

- Storms move into southeast Minnesota/Western Wisconsin early evening then race southeast.
- Main impacts will be between 9 PM and 3 AM.
- **Widespread wind damage possible!**
- Have a place to seek shelter if you are outdoors, such as camping.
- Stay tuned for forecast refinements as we draw closer to this evening.



NATIONAL WEATHER SERVICE LA CROSSE

NATIONAL OCEANIC AND ATMOSPHERIC ADMINISTRATION

SEVERE WEATHER BRIEFING

Expected Hazards

- Damaging Winds (70 mph?)
- Brief Heavy Rainfall
- Some Large Hail



Recorded:

7/12/2015 12:27 PM



NATIONAL WEATHER SERVICE LA CROSSE

NATIONAL OCEANIC AND ATMOSPHERIC ADMINISTRATION